



# touchREVIEWS in Endocrinology

VOLUME 18 • ISSUE 2 • 2022

EDITOR-IN-CHIEF: JOHN DOUPIS

## **APOC3 Interference for Familial Chylomicronaemia Syndrome**

Robert A Hegele

## **A New Medical Therapy for Multiple Endocrine Neoplasia Type 1?**

Hessa Boharoon and Ashley Grossman

## **Testosterone Replacement Therapy: A Narrative Review with a Focus on New Oral Formulations**

Salman Z Bhat and Adrian S Dobs

## **Spurious Serum Hormone Immunoassay Results: Causes, Recognition, Management**

Glenn D Braunstein

[www.touchENDOCRINOLOGY.com](http://www.touchENDOCRINOLOGY.com)



# touchREVIEWS in Endocrinology

Volume 18 • Issue 2 • 2022

Cover image: stem cell, endocrine system of the body, medical abstraction, 3d rendering By ustas  
© shutterstock.com

*touchREVIEWS in Endocrinology* wishes to thank the organisations below for their assistance.  
This does not constitute any official endorsement.



## Editorial Directors

Gina Furnival  
Helen Fowler  
Sophie Nickelson  
Katey Gabrysch

## Commissioning Editors

Victoria Jones  
Shanice Allen

## Editorial Workflow

Lisa Glass  
Heather Hall  
Marianna Mignani  
Atiya Henry  
Danielle Crosby

## Design Manager

Julie Stevenson

## Head Medical & Editorial

Nicola Cartridge  
E: nicola.cartridge@touchmedicalmedia.com  
T: +44 (0)20 7193 3186

## CEO & Managing Director

Barney Kent  
E: barney.kent@touchmedicalmedia.com  
T: +44 (0)20 7193 3009

## Head of Strategic Partnerships

Caroline Markham  
E: caroline.markham@touchmedicalmedia.com  
T: +44 (0)20 7193 3704

All information obtained by Touch Medical Media and each of the contributors from various sources is as current and accurate as possible. However, due to human or mechanical errors, Touch Medical Media and the contributors cannot guarantee the accuracy, adequacy or completeness of any information, and cannot be held responsible for any errors or omissions, or for the results obtained from the use thereof. Where opinion is expressed, it is that of the authors and does not necessarily coincide with the editorial views of Touch Medical Media. Statistical and financial data in this publication have been compiled on the basis of factual information and do not constitute any investment advertisement or investment advice. For the avoidance of doubt, the information contained in this publication is intended for use by licensed medical professionals. The content should not be considered medical advice, diagnosis or treatment recommendations.

© 2022 Touch Medical Media Group Holdings Ltd, is a private limited company registered in England and Wales at Lancashire Gate, 21 Tiviot Dale, Stockport, Cheshire, SK1 1TD, UK, with registered number 08197142.  
All rights reserved.

ISSN: 2752-5457



[www.touchmedicalmedia.com](http://www.touchmedicalmedia.com)

# touchREVIEWS

## in Endocrinology

### Editor-in-Chief

#### John Doupis

Director, Diabetes Division, Iatriko Palaiou Falirou Medical Center and Internal Medicine and Diabetes Department, NS Naval Hospital, Athens, Greece

### Section Editors

#### Glenn D Braunstein (Oncology)

Chairman, Cedars-Sinai Medical Center, Los Angeles CA, USA

#### Hossein Gharib (Thyroid)

Professor of Medicine, Mayo Clinic College of Medicine

#### Neil Gittoes (Bone disorders)

Head, Centre for Endocrinology, Diabetes and Metabolism, University Hospitals Birmingham and University of Birmingham, Birmingham, UK

#### Ashley Grossman (Obesity)

Professor of Endocrinology, Oxford Centre for Diabetes, Endocrinology and Metabolism, University of Oxford, Oxford, UK

#### Chantal Mathieu (Diabetes)

Professor of Medicine, Catholic University of Leuven, Leuven, Belgium

### Editorial Board

#### Martin Abrahamson

Medical Director, Joslin Clinic and Associate Professor of Medicine, Harvard Medical School, Boston, MA USA

#### S Faisal Ahmed

Consultant in Paediatric Endocrinology, University of Glasgow, Glasgow, UK

#### Sarah Ali

Consultant, Diabetes and General Medicine, Royal Free London NHS Foundation Trust, London, UK

#### Silva Arslanian

Professor of Pediatrics, University of Pittsburgh, School of Medicine, Pittsburgh, PA, USA

#### Bruce W Bode

Diabetes Specialist, Atlanta Diabetes Associates, Atlanta, GA, USA

#### Philippe Bouchard

Professor and Chairman, Hospital Saint Antoine and University Pierre and Marie Curie, Paris, France

#### Pauline M Camacho

Associate Professor of Medicine and Director, Loyola University Osteoporosis and Metabolic Bone Disease Center, Maywood, IL, USA

#### Francesco Chiarelli

Professor of Pediatrics, D'Annunzio University of Chieti-Pescara, Chieti, Italy

#### George P Chrousos

Professor and Chairman, First Department of Pediatrics, University of Athens Medical School, Athens, Greece

#### Annamaria Colao

Full Professor, University of Naples Federico II, Naples, Italy

#### Sam Dagogo-Jack

Professor of Medicine, University of Tennessee Health Science Center, Memphis, TN, USA

#### Terry F Davies

Professor of Medicine, Mount Sinai School of Medicine, New York City, NY, USA

#### Stephen N Davis

Professor, Chair of Medicine, University of Maryland Medical Center, Baltimore, MD USA

#### Jaime A Davidson

Clinical Professor of Internal Medicine, University of Texas Southwestern Medical School, Dallas, TX, USA

#### Thomas Danne

Professor of Paediatrics, Children's Hospital 'Auf der Bult', Hannover, Germany

#### Deep Dutta

Senior Endocrinologist, CEDAR Super-specialty Clinics, New Delhi, India

#### Steven V Edelman

Professor of Medicine, University of California at San Diego, La Jolla, CA USA

#### Anne-Marie Felton

President, Federation of European Nurses in Diabetes (FEND), Newcastle On Tyne, UK

#### Ulla Feldt-Rasmussen

Professor, Centre of Cancer and Organ Diseases, University of Copenhagen, Copenhagen, Denmark

#### Angus Forbes

Professor of Diabetes Nursing and Chair, Foundation of European Nurses in Diabetes (FEND), King's College London, London, UK

#### Andrea R Genazzani

Professor and Director, University of Pisa, Pisa, Italy

#### Ezio Ghigo

Professor, Division of Endocrinology and Metabolism, University of Turin, Turin, Italy

#### Burkhard Göke

Professor and Director, Medical Clinic II, Ludwig Maximilians University Munich, Munich, Germany

#### Baptist Gallwitz

Professor of Medicine, Eberhard Karls University of Tübingen, Tübingen, Germany

#### James R Gavin III

Clinical Professor of Medicine, Emory University School of Medicine, Atlanta, GA, USA

#### Osama Hamdy

Medical Director, Joslin Obesity Clinical Program, Joslin Diabetes Center, Harvard Medical School, Boston, MA, USA

#### Anthony M Heagerty

Professor, University of Manchester, Manchester, UK

#### Priscilla Hollander

Medical Director, Ruth Collins Diabetes Center, Baylor University Medical Center, Waco, TX, USA

#### Jens Juul Holst

Professor of Medical Physiology, University of Copenhagen, Copenhagen, Denmark

#### Ilpo Huhtaniemi

Emeritus Professor of Reproductive Endocrinology, Imperial College London, London, UK

#### Anna-Lena Hulting

Professor, Endocrinology, Metabolism and Diabetology, Karolinska University Hospital, Solna, Sweden

#### Stephen LaFranchi

Professor, Oregon Health and Science University, Portland, OR, USA

#### Wendy Lane

Director of Clinical Research Mountain Diabetes and Endocrine Center Asheville, NC, USA

#### Claude K Lardinois

Professor of Medicine, University of Nevada School of Medicine, Reno, NV, USA

#### Edward R Laws

Professor of Neurosurgery, Brigham & Women's Hospital, Harvard Medical School, Boston, MA, USA

#### Harold E Lebovitz

Professor of Medicine, The State University of New York Health Science Center, New York, NY, USA

#### Andrea Lenzi

Full Professor of Endocrinology, 'La Sapienza' University of Rome, Rome, Italy

#### Sanjay Kalra

Executive Editor, Joshi Diabetes, Bharti Hospital, Karnal, India

#### Laurence Katznelson

Professor of Neurosurgery and Medicine, Stanford University School of Medicine, Stanford, CA, USA

#### Robert Knutzen

President and CEO, Pituitary Network Association (PNA), Thousand Oaks, CA, USA

#### Rayaz A Malik

Professor of Medicine at Weill Cornell Medical College, New York City, New York, NY, USA

#### Jeffrey I Mechanick

Professor of Medicine, Mount Sinai School of Medicine, Miami, FL, USA

#### Luigi Meneghini

Associate Professor of Clinical Medicine, University of Miami Miller School of Medicine, Miami, FL, USA

# touchREVIEWS

## in Endocrinology

### Editorial Board (continued)

**Jean Claude Mbanya**

Professor of Medicine and Endocrinology, University of Yaoundé, Cameroon, Africa

**Neely Mozawala**

Diabetes Specialist Podiatrist, London, UK

**Furio Pacini**

Professor of Endocrinology, University of Siena, Siena, Italy

**Elizabeth Pearce**

Professor of Medicine, Boston University School of Medicine, Boston, MA USA

**Enrico Papini**

Professor of Endocrinology, 'La Sapienza' University of Rome Medical School, Rome, Italy

**Ralf Paschke**

Professor of Internal Medicine and Endocrinology, Leipzig University, Leipzig, Germany

**Vera Popovic-Brkic**

Professor of Medicine, University of Belgrade School of Medicine, Belgrade, Serbia

**Michael B Ranke**

Professor, University Children's Hospital, Eberhard Karls University, Tübingen, Germany

**João Filipe Raposo**

Assistant Professor of Public Health, Medical Faculty of New University of Lisbon; Clinical Director, Protective Association of Diabetics of Portugal, Lisbon, Portugal

**Donna Ryan**

President, American Association of Diabetes Educators

**Martin Silink**

Professor of Paediatric Endocrinology, University of Sydney; Children's Hospital, Westmead, Sydney, Australia

**Linda Siminerio**

Executive Director, University of Pittsburgh Diabetes Institute, Pittsburgh, PA USA

**Johannes WA Smit**

Professor and Chairman, Leiden University Medical Centre, Leiden, Netherlands

**Tommaso Simoncini**

Professor of Obstetrics and Gynaecology, University of Pisa, Pisa, Italy

**Solomon Tesfaye**

Consultant Physician and Honorary Professor of Diabetic Medicine, University of Sheffield, Sheffield, UK

**Peter Trainer**

Professor of Endocrinology, University of Manchester, Manchester, UK

**Graham R Williams**

Professor of Endocrinology, Imperial College London, London, UK

**Elena Varlamov**

Assistant Professor, Oregon Health and Science University, Portland, OR, USA

**Virginia Valentine**

Sage Specialty Care for Diabetes and Endocrine, Albuquerque, NM USA

**Aaron I Vinik**

Professor of Medicine, Eastern Virginia Medical School, Norfolk, VA USA

# touchREVIEWS in Endocrinology

Established: December 2005 Frequency: Bi-annual  
Current edition: Volume 18 Issue 2, 2022

## Aims and Scope

- *touchREVIEWS in Endocrinology* enables time-pressured physicians to stay abreast of major advances and opinion in endocrine practice in Europe.
- *touchREVIEWS in Endocrinology* comprises balanced and comprehensive articles, addressing the most important and salient developments in the endocrinology field.
- *touchREVIEWS in Endocrinology* endeavours to support physicians, clinicians and related healthcare professionals in continuously developing their knowledge, effectiveness and productivity. The editorial policy has been designed to encourage discussion among this peer group.
- Comprehensive bibliographies for each article mean that *touchREVIEWS in Endocrinology* is an informative and valuable reference tool for use throughout the year.
- All articles are subject to peer review, and must adhere to the ICMJE, GPP 2022, and COPE guidelines.

## Structure and Format

- *touchREVIEWS in Endocrinology* is a peer-reviewed, free-to-access, bi-annual journal comprising expert interviews, review articles, case reports, editorials, special reports and original research.
- The structure of each edition of the publication comprises section categories determined by the Managing Editor. The degree of coverage assigned to each category is the decision of the Managing Editor, and in part reflects the views of the Editorial Board.
- All articles disclose any author disclosures along with any funding, financial support, and medical writing assistance.
- Each edition of *touchREVIEWS in Endocrinology* is published in full online at [www.touchENDOCRINOLOGY.com](http://www.touchENDOCRINOLOGY.com)

## Editorial Expertise

*touchREVIEWS in Endocrinology* is supported by various levels of expertise:

- Guidance from an Editorial Board consisting of leading authorities from a variety of endocrine disciplines.
- Invited contributors who are recognized authorities from their respective fields.
- Peer review – conducted by experts appointed for their experience and knowledge of a specific topic.
- An experienced team of editors and technical editors.

## Peer Review

- On submission, all articles are assessed by the Managing Editor to determine their suitability for inclusion and appropriateness for peer review.
- The Managing Editor identifies at least two appropriate reviewers, who are selected on the basis of their specialist knowledge in the relevant area, following consultation with a member of the Editorial Board where necessary.
- We aim to have the final peer review decision within 4 weeks.
- Following review, papers are either accepted without modification, returned to the author(s) to incorporate required changes or not accepted for publication.
- The Managing Editor reserves the right to accept or reject any proposed amendments on the advice of the Editorial Board and reviewers.

## Submissions and Instructions for Authors

- The Managing Editor commissions articles with guidance from the Editorial Board and unsolicited articles are welcomed.
- The Managing Editor is always keen to hear from authors wishing to discuss potential submissions, and will give due consideration to any proposals. Please contact the Managing Editor for further details.
- The 'Instructions for Authors' information is available for download at [www.touchENDOCRINOLOGY.com](http://www.touchENDOCRINOLOGY.com)

## Distribution and Readership

*touchREVIEWS in Endocrinology* is distributed bi-annually through controlled circulation to healthcare and pharmaceutical professionals in the field in Europe.

## Abstracting and Indexing

*touchREVIEWS in Endocrinology* is abstracted, indexed and listed in PubMed Central, Embase, EBSCO, Genamics JournalSeek, Google Scholar, IndexCopernicus and Summon by Serial Solutions.

## Free-to-access

All articles are free-to-access, which allows everyone in the endocrinology field to download published articles for free.

## Online

[www.touchmedicalmedia.com](http://www.touchmedicalmedia.com) provides clinicians and other industry professionals with a free resource of articles spanning eight therapy areas including cardiology, endocrinology, immunology, infectious diseases, neurology, oncology and haematology, ophthalmology and respiratory and pulmonary diseases.

## Society Partners

[touchENDOCRINOLOGY.com](http://touchENDOCRINOLOGY.com) has developed very valuable society partnerships with the most respected not-for-profit medical societies both in Europe and the USA. These partnerships are key as [touchENDOCRINOLOGY.com](http://touchENDOCRINOLOGY.com) helps to promote awareness of these medical societies while also providing free-to-access, peer-reviewed articles and multimedia content to the society members, which ensures that the community is kept up-to-date with the latest cutting-edge content and opinion from world-renowned doctors.

## About Touch Medical Media

Touch Medical Media publishes a rich and diverse portfolio of free-to-access, peer-reviewed journals across the clinical and pharmaceutical arenas. Touch Medical Media aims to assist in the education and practice of healthcare and pharmaceutical professionals. □

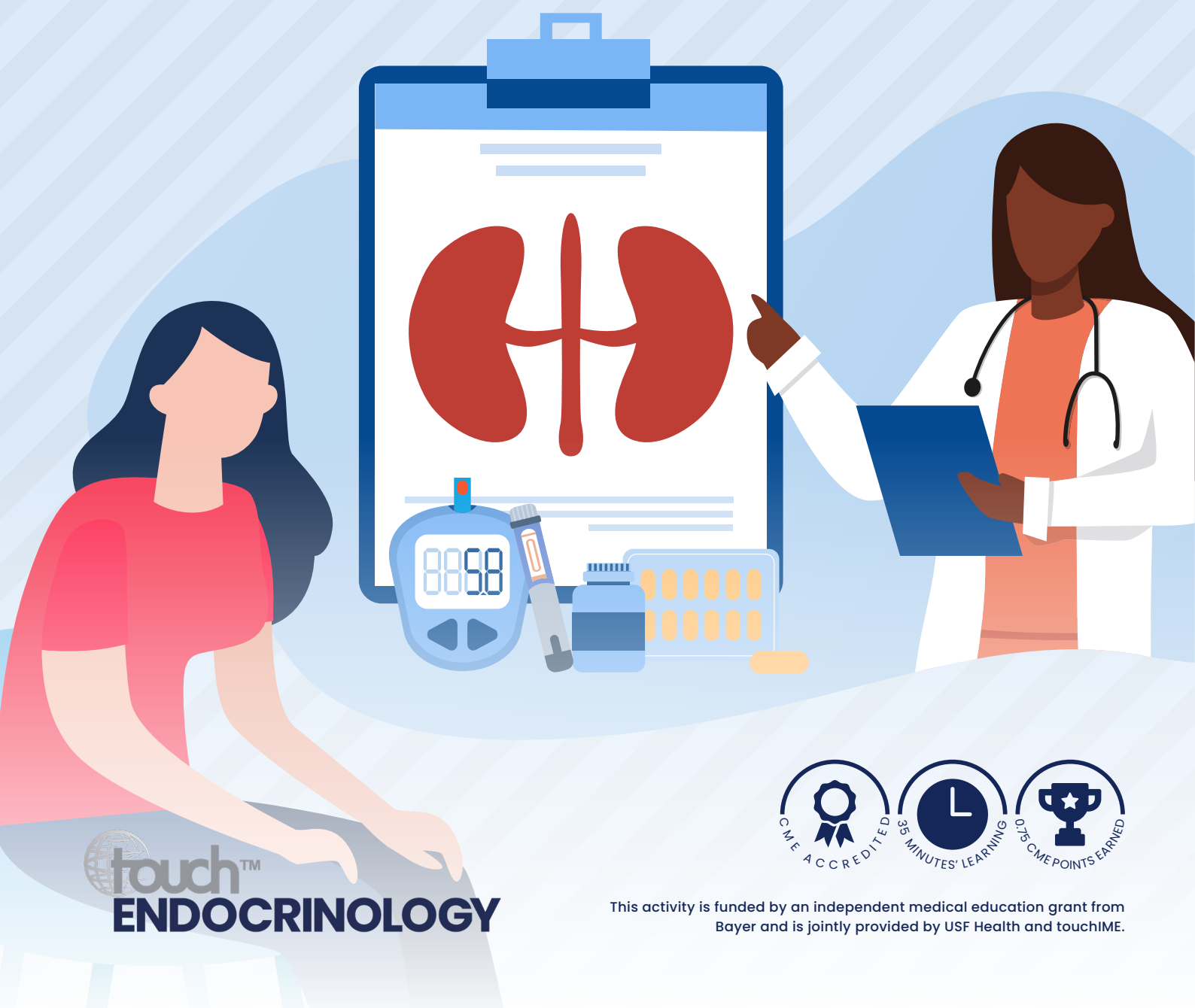




# Addressing cardiorenal outcomes in CKD and T2D:

What are the key considerations for daily practice?

**LEARN MORE**

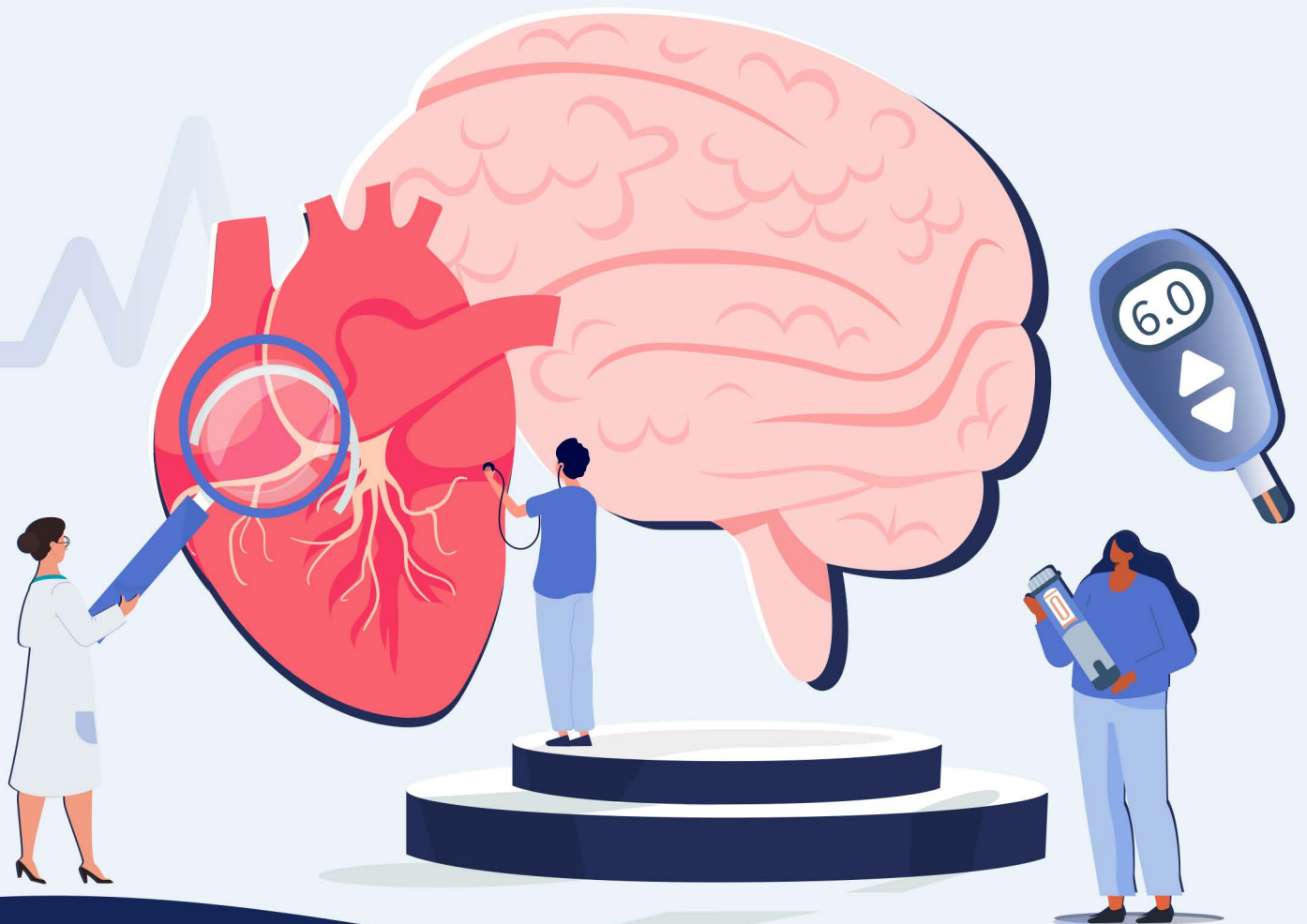


 **touch™**  
**ENDOCRINOLOGY**

This activity is funded by an independent medical education grant from Bayer and is jointly provided by USF Health and touchIME.

# Multidisciplinary insights on the role of GLP-1 RAs in the modern management of stroke in patient with T2D

[Learn more](#)



# Join the **touchENDOCRINOLOGY** online community for FREE access to



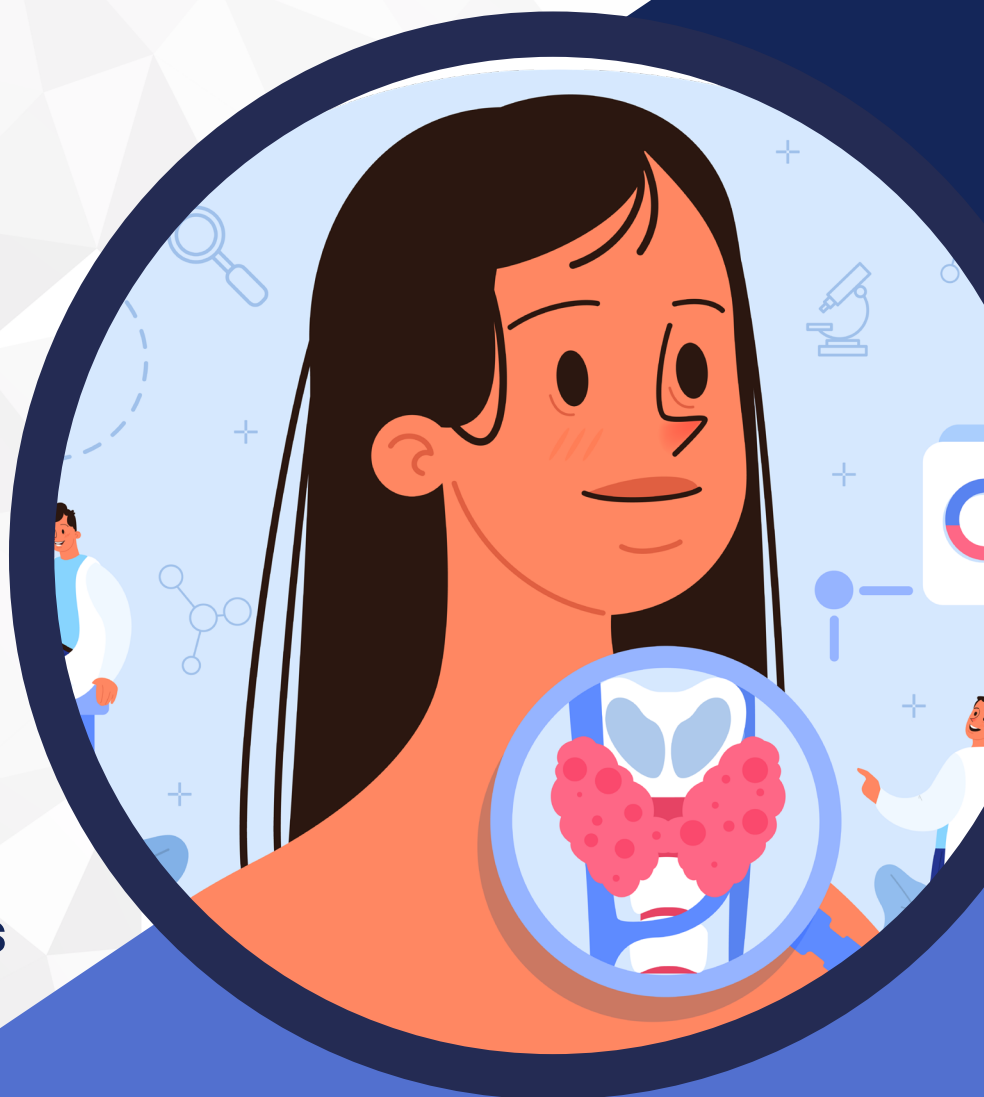
**Practical articles**



**Expert interviews**



**News and insights**



  
**touch<sup>TM</sup>  
ENDOCRINOLOGY**

Visit [touchENDOCRINOLOGY.com](https://touchENDOCRINOLOGY.com)



Facebook



Twitter



Instagram



LinkedIn



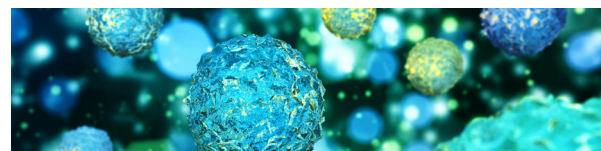
YouTube



Podcast



## Contents



## Foreword

## 81 Foreword

John Doupis

Director, Diabetes Division, Iatriko Palaioi Falirou Medical Center and Internal Medicine and Diabetes Department, NS Naval Hospital, Athens, Greece

## Editorials

## Cardiovascular Risk and Metabolic Disorders

## 82 APOC3 Interference for Familial Chylomicronaemia Syndrome

Robert A Hegele

Departments of Medicine, (Division of Endocrinology) and Biochemistry, Western University, London, ON, Canada

## Paediatric Endocrinology

## 84 Macimorelin Acetate for the Diagnosis of Childhood-onset Growth Hormone Deficiency

Rohan K Henry

Section of Endocrinology, Department of Pediatrics, Nationwide Children's Hospital, The Ohio State University College of Medicine Columbus, OH, USA

## Commentary

## Endocrine Oncology

## 86 A New Medical Therapy for Multiple Endocrine Neoplasia Type 1?

Hessa Boharoon and Ashley Grossman

Neuroendocrine Tumour Unit, ENETS Centre of Excellence, Royal Free Hospital, London, UK

## Reviews

## Cardiovascular Risk

## 89 Statin-related Muscle Toxicity: An Evidence-based Review

Mohammad S Jeeyavudeen,<sup>1</sup> Joseph M Pappachan<sup>2,3</sup> and Ganesan Arunagirinathan<sup>1</sup>

1. Western General Hospital, Edinburgh Centre for Endocrinology & Diabetes, Edinburgh, UK; 2. Lancashire Teaching Hospitals NHS Trust, Lancashire, UK; 3. Manchester Metropolitan University, Manchester, UK

## Diabetes

## 96 Assessing the Incidence of New-onset Diabetes Mellitus with Statin Use: A Systematic Review of Systematic Reviews and Meta-analyses

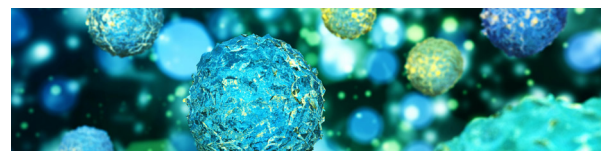
Harmanjit Singh,<sup>1</sup> Pallavi Sikarwar,<sup>2</sup> Supreet Khurana<sup>3</sup> and Jatin Sharma<sup>4</sup>

1. Department of Pharmacology, Government Medical College and Hospital, Chandigarh, India; 2. Government Medical College and Hospital, Chandigarh, India; 3. Department of Neonatology, Government Medical College and Hospital, Chandigarh, India; 4. Department of Pharmacology, All India Institute of Medical Sciences, New Delhi, India

## 102 Non-albuminuric Diabetic Kidney Disease Phenotype: Beyond Albuminuria

Luis D'Marco,<sup>1,2</sup> Xavier Guerra-Torres,<sup>3</sup> Iris Viejo,<sup>4</sup> Luis Lopez-Romero,<sup>4</sup> Alejandra Yugueros<sup>5</sup> and Valmore Bermúdez<sup>6</sup>

1. Universidad Cardenal Herrera-CEU, CEU Universities, Valencia, Spain; 2. Hospital General Universitario de Valencia, Valencia, Spain; 3. Hospital Universitario Príncipe de Asturias, Madrid, Spain; 4. Nephrology Department, Hospital Universitario i Politècnic La Fe, Valencia, Spain; 5. Internal Medicine Department, Hospital Arnau de Vilanova, Valencia, Spain; 6. Universidad Simón Bolívar, Facultad de Ciencias de la Salud, Barranquilla, Colombia



## Reviews

### Diabetes

#### 106 Clinical Evidence and Proposed Mechanisms for Cardiovascular and Kidney Benefits from Sodium–glucose Co-transporter-2 Inhibitors

Joshua J Neumiller,<sup>1,2</sup> Fredrick J Lienhard,<sup>1</sup> Radica Z Alicic<sup>2,3</sup> and Katherine R. Tuttle<sup>2,3,4</sup>

1. College of Pharmacy and Pharmaceutical Sciences, Washington State University, Spokane, WA, USA; 2. Providence Medical Research Center, Providence Health and Services, Spokane, WA, USA; 3. University of Washington School of Medicine, University of Washington, Spokane and Seattle, WA, USA; 4. Nephrology Division, Kidney Research Institute, and Institute of Translational Health Sciences, University of Washington, Spokane and Seattle, WA, USA

#### 116 Use of Continuous Glucose Monitoring in the Older Adult: A Review of Benefits, Challenges and Future Directions

Lalita Prasad-Reddy,<sup>1</sup> Diana Isaacs<sup>2</sup> and Alvin Godina<sup>3</sup>

1. Associate Professor of Cellular & Molecular Pharmacology, Chicago Medical School, Chicago, IL, USA; Clinical Pharmacy Specialist, Adult Internal Medicine, Rush University Internists, Chicago, IL, USA; 2. Co-Director, Center of Excellence for Endocrine Disorders in Pregnancy, Cleveland Clinic Endocrinology & Metabolism Institute, Cleveland, OH, USA; 3. Clinical Pharmacy Specialist, Ambulatory Care, Rush University Medical Center, Chicago, IL, USA

### Paediatric Endocrinology

#### 122 Function of the Hypothalamic–Pituitary–Gonadal Axis in Children and Adolescents with Cancer

Jimena Lopez Dacal,<sup>1</sup> Romina P Grinspon<sup>1</sup> and Rodolfo A Rey<sup>1,2</sup>

1. Centro de Investigaciones Endocrinológicas “Dr. César Bergadá” (CEDIE), CONICET – FEI – División de Endocrinología, Hospital de Niños Ricardo Gutiérrez, Buenos Aires, Argentina; 2. Departamento de Histología, Biología Celular, Embriología y Genética, Facultad de Medicina, Universidad de Buenos Aires, Buenos Aires, Argentina

### General Endocrinology

#### 133 Testosterone Replacement Therapy: A Narrative Review with a Focus on New Oral Formulations

Salman Z Bhat and Adrian S Dobs

Department of Endocrinology, Diabetes and Metabolism, Johns Hopkins Hospital, Baltimore, MD, USA

#### 141 Spurious Serum Hormone Immunoassay Results: Causes, Recognition, Management

Glenn D Braunstein

Department of Medicine, Cedars-Sinai Medical Center, Los Angeles, CA, USA

### Liver Disorders

#### 148 Advances and Emerging Therapies in the Treatment of Non-alcoholic Steatohepatitis

Paul N Brennan,<sup>1,2,3</sup> John F Dillon<sup>2,3</sup> and Rory McCrimmon<sup>2,3</sup>

1. The University of Edinburgh, Centre for Regenerative Medicine, Edinburgh, UK; 2. NHS Tayside, Ninewells Hospital and Medical School, Dundee, UK; 3. The University of Dundee, Department of Molecular and Clinical Medicine, Ninewells Hospital and Medical School, Dundee, UK