



touchREVIEWS in Endocrinology

VOLUME 19 • ISSUE 2 • 2023

EDITOR-IN-CHIEF: JOHN DOUPIS

The Global Liver Institute "Liver Health is Public Health" Initiative

Donna R Cryer

Fezolinetant: A Potential Treatment for Moderate to Severe Vasomotor Symptoms of Menopause

Barbara DePree

Teplizumab in Type 1 Diabetes Mellitus: An Updated Review

Simran Thakkar, Aditi Chopra, Lakshmi Nagendra, et al.

**Prognostic Biomarkers in Pituitary Tumours:
A Systematic Review**

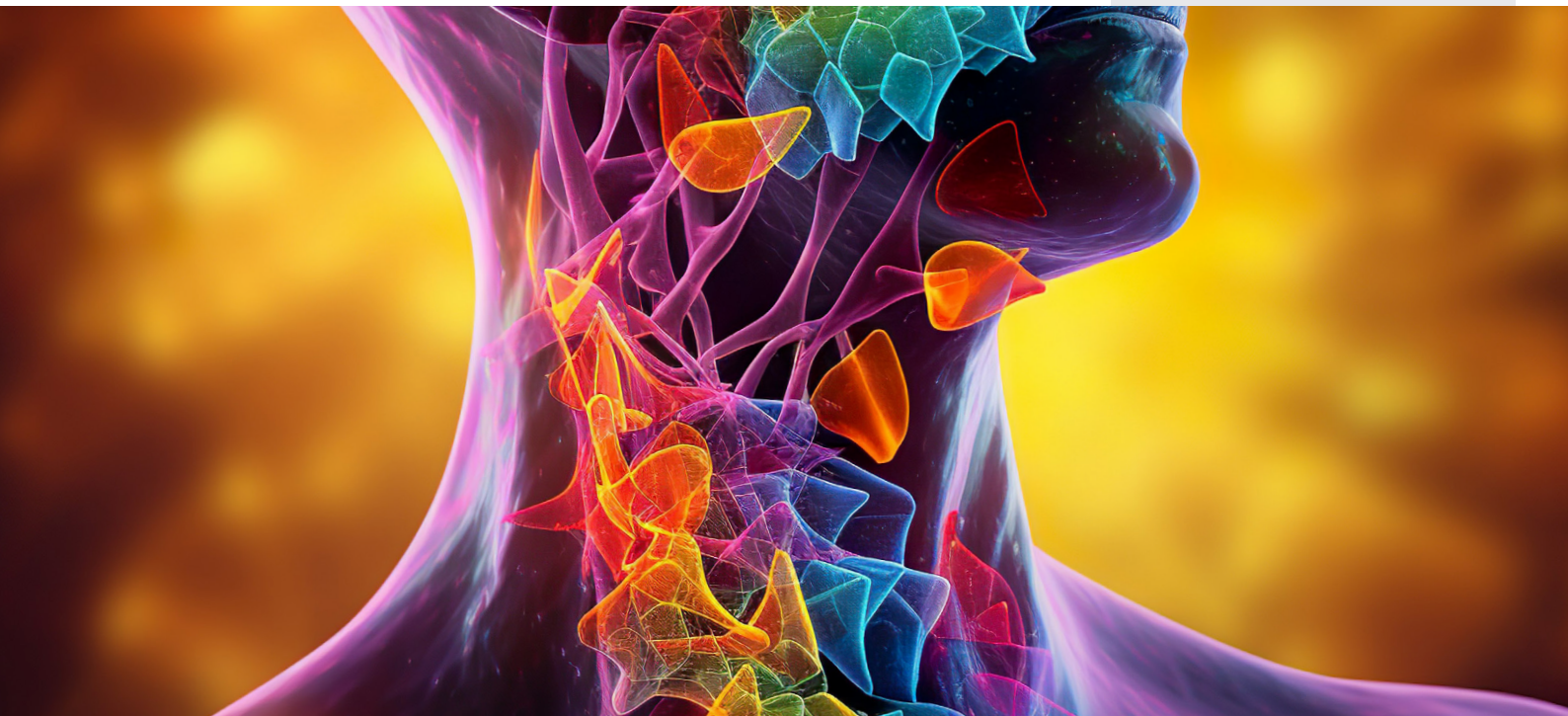
Eirini Papadimitriou, Eleftherios Chatzellis, Anastasia Dimitriadi, et al.

www.touchENDOCRINOLOGY.com

touchREVIEWS in Endocrinology

Volume 19 • Issue 2 • 2023

Cover image: The Intricacies of the Thyroid: Anatomical Representation of the Thyroid Gland made with Generative AI
By Svitlana | © stock.adobe.com



touchREVIEWS in Endocrinology wishes to thank the organizations below for their assistance. This does not constitute any official endorsement.



All information obtained by Touch Medical Media and each of the contributors from various sources is as current and accurate as possible. However, due to human or mechanical errors, Touch Medical Media and the contributors cannot guarantee the accuracy, adequacy or completeness of any information, and cannot be held responsible for any errors or omissions, or for the results obtained from the use thereof. Where opinion is expressed, it is that of the authors and does not necessarily coincide with the editorial views of Touch Medical Media. Statistical and financial data in this publication have been compiled on the basis of factual information and do not constitute any investment advertisement or investment advice. For the avoidance of doubt, the information contained in this publication is intended for use by licensed medical professionals. The content should not be considered medical advice, diagnosis or treatment recommendations.

© 2023 Touch Medical Media Group Holdings Ltd, is a private limited company registered in England and Wales at Lancashire Gate, 21 Tiviot Dale, Stockport, Cheshire, SK1 1TD, UK, with registered number 08197142. All rights reserved.

eISSN: 2752-5457

Senior Editorial Director
Gina Furnival

Editorial Directors
Katey Gabrysch
Sophie Nickelson
Carla Junkier

Commissioning Editors
Victoria Jones
Shanice Allen

Editorial Workflow
Lisa Glass
Heather Hall
Marianna Mignani
Danielle Crosby

Head Medical & Editorial
Nicola Cartridge
E: nicola.cartridge@touchmedicalmedia.com
T: +44 (0)20 7193 3186

CEO & Managing Director
Barney Kent
E: barney.kent@touchmedicalmedia.com
T: +44 (0)20 7193 3009

Head of Strategic Partnerships
Caroline Markham
E: caroline.markham@touchmedicalmedia.com
T: +44 (0)20 7193 3704



www.touchmedicalmedia.com

touchREVIEWS

in Endocrinology

Editor-in-Chief

John Doupis

Director, Diabetes Division, Iatriko Palaiou Fallirou Medical Center and Internal Medicine and Diabetes Department, NS Naval Hospital, Athens, Greece

Section Editors

Glenn D Braunstein (endocrine oncology)

Chairman, Cedars-Sinai Medical Center, Los Angeles CA, USA

George P Chrousos (paediatric endocrinology)

Professor and Chairman, First Department of Pediatrics, Director, Division of Endocrinology, Metabolism and Diabetes, University of Athens Medical School, Children's Hospital Aghia Sophia, Athens, Greece

Hossein Gharib (thyroid)

Professor of Medicine, Mayo Clinic College of Medicine, USA

Neil Gittoes (bone disorders)

Head, Centre for Endocrinology, Diabetes and Metabolism, University Hospitals Birmingham and University of Birmingham, Birmingham, UK

Ashley Grossman (pituitary disorders/ neuroendocrine)

Professor of Endocrinology, OCDEM, University of Oxford, Oxford, UK

Chantal Mathieu (diabetes)

Professor of Medicine, Catholic University of Leuven, Leuven, Belgium

Alexander Miras (obesity)

Senior Clinical Lecturer and Consultant in Endocrinology at Imperial College London, London, UK

Joseph Pappachan (adrenal disorders)

Clinical lead for research & innovation in Endocrinology & Metabolism at Lancashire Teaching Hospitals NHS Trust (LHTR) Clinical Chair to Diabetic Foot & Musculoskeletal Metabolic Research at Manchester Metropolitan University, UK

Editorial Board

Martin Abrahamson

Medical Director, Joslin Clinic and Associate Professor of Medicine, Harvard Medical School, Boston, MA, USA

Kristi Alexandraki

Consultant, Research Fellow, National and Kapodistrian University of Athens, Athens, Greece

Sarah Ali

Consultant, Diabetes and General Medicine, Royal Free London NHS Foundation Trust, London, UK

Steve Bain

Assistant Medical Director for Research & Development for Swansea Bay University Health Board; Clinical Director of the Diabetes Research Unit in Swansea University, Swansea, UK

Saptarshi Bhattacharya

Senior Consultant Endocrinology, Indraprastha Apollo Hospitals, Sarita Vihar & Director, eDEC, Delhi, India

Bruce W Bode

Diabetes Specialist, Atlanta Diabetes Associates, Atlanta, GA, USA

Paul Brennan

Clinical Lecturer and Assistant Professor, University of Dundee, Dundee, UK

Pauline M Camacho

Associate Professor of Medicine and Director, Loyola University Osteoporosis and Metabolic Bone Disease Center, Maywood, IL, USA

Francesco Chiarelli

Professor of Paediatrics, D'Annunzio University of Chieti-Pescara, Chieti, Italy

George P Chrousos

Professor and Chairman, First Department of Pediatrics, University of Athens Medical School, Athens, Greece

Ides Colin

Endocrino-Diabetologist, Department of Internal Medicine, Centre Hospitalier Régional (CHR) Mons-Hainaut/Groupe Jolimont, Mons, Belgium

Sam Dagogo-Jack

Professor of Medicine, University of Tennessee Health Science Center, Memphis, TN, USA

Luis D'Marco

Nephrologist & Clinical researcher, Cardenal Herrera University, Valencia, Spain

Terry F Davies

Professor of Medicine, Mount Sinai School of Medicine, New York City, NY, USA

Stephen N Davis

Professor, Chair of Medicine, University of Maryland Medical Center, Baltimore, MD, USA

Deep Dutta

Senior Endocrinologist, CEDAR Super-specialty Clinics, New Delhi, India

Ulla Feldt-Rasmussen

Professor, Centre of Cancer and Organ Diseases, University of Copenhagen, Copenhagen, Denmark

Angus Forbes

Professor of Diabetes Nursing and Chair, Foundation of European Nurses in Diabetes (FEND), King's College London, London, UK

Andrea R Genazzani

Professor and Director, University of Pisa, Pisa, Italy

Francesco Giorgino

Professor of Endocrinology; Director, Department of Precision and Regenerative Medicine and Ionian Area; Head, Section of Internal Medicine, Endocrinology, Andrology and Metabolic Diseases, University of Bari Aldo Moro; Chief, Division of Endocrinology, University Hospital Policlinico Consorziale, Bari, Italy

Osama Hamdy

Medical Director, Joslin Obesity Clinical Program, Joslin Diabetes Center, Harvard Medical School, Boston, MA, USA

Anna-Lena Hulting

Professor, Endocrinology, Metabolism and Diabetology, Karolinska University Hospital, Solna, Sweden

Sanjay Kalra

Executive Editor, JoSH Diabetes, Bharti Hospital, Karnal, India

Laurence Katznelson

Professor of Neurosurgery and Medicine, Stanford University School of Medicine, Stanford, CA, USA

Robert Knutson

President and CEO, Pituitary Network Association (PNA), Thousand Oaks, CA, USA

Stephen LaFranchi

Professor, Oregon Health and Science University, Portland, OR, USA

Harold E Lebovitz

Professor of Medicine, The State University of New York Health Science Center, New York, NY, USA

Neely Mozawala

Diabetes Specialist Podiatrist, London, UK

Steven Nissen

Chief Academic Officer, Heart, Vascular and Thoracic Institute, Cleveland Clinic; Professor of Medicine, Cleveland Clinic Lerner School of Medicine, Case Western Reserve University, Cleveland, OH, USA

Furio Pacini

Professor of Endocrinology, University of Siena, Siena, Italy

Elizabeth Pearce

Professor of Medicine, Boston University School of Medicine, Boston, MA, USA

Rodolfo Rey

Director, Centro de Investigaciones Endocrinológicas "Dr. César Bergadá" (CEDIE), CONICET - FEI - División de Endocrinología, Hospital de Niños Ricardo Gutiérrez, Buenos Aires, Argentina

Donna Ryan

President, American Association of Diabetes Educators, Chicago, IL, USA

Linda Siminerio

Executive Director, University of Pittsburgh Diabetes Institute, Pittsburgh, PA, USA

Tommaso Simoncini

Professor of Obstetrics and Gynaecology, University of Pisa, Pisa, Italy

Solomon Tesfaye

Consultant Physician and Honorary Professor of Diabetic Medicine, University of Sheffield, Sheffield, UK

Peter Trainer

Professor of Endocrinology, University of Manchester, Manchester, UK

Elena Varlamov

Assistant Professor, Oregon Health and Science University, Portland, OR, USA

Virginia Valentine

Sage Specialty Care for Diabetes and Endocrine, Albuquerque, NM, USA

touchREVIEWS in Endocrinology

Established: December 2005 Frequency: Bi-annual
Current edition: Volume 19 Issue 2, 2023

Aims and scope

- *touchREVIEWS in Endocrinology* enables time-pressured physicians to stay abreast of major advances and opinions in endocrine practice.
- *touchREVIEWS in Endocrinology* comprises balanced and comprehensive articles, addressing the most important and salient developments in the endocrinology field.
- *touchREVIEWS in Endocrinology* endeavours to support physicians, clinicians and related healthcare professionals in continuously developing their knowledge, effectiveness and productivity. The editorial policy has been designed to encourage discussion among this peer group.
- Comprehensive bibliographies for each article mean that *touchREVIEWS in Endocrinology* is an informative and valuable reference tool for use throughout the year.
- All articles are subject to peer review, and must adhere to the ICMJE, GPP 2022, and COPE guidelines.

Structure and format

- *touchREVIEWS in Endocrinology* is a peer-reviewed, free-to-access, bi-annual journal comprising review articles, original research, case reports, editorials, expert interviews and practice pearls.
- The structure of each edition of the publication comprises section categories determined by the Editor. The degree of coverage assigned to each category is the decision of the Editor, and in part reflects the views of the Editorial Board.
- All articles disclose any author financial and non-financial relationships and activities, along with any funding, financial support and medical writing assistance.
- Each edition of *touchREVIEWS in Endocrinology* is published in full online at www.touchENDOCRINOLOGY.com

Editorial expertise

touchREVIEWS in Endocrinology is supported by various levels of expertise.

- Guidance from an Editorial Board consisting of leading authorities from a variety of endocrine disciplines.
- Invited contributors who are recognized authorities from their respective fields.
- Peer review: conducted by experts appointed for their experience and knowledge of a specific topic.
- An experienced team of Editors and Technical Editors.

Peer review

- On submission, all articles are assessed by the Editor to determine their suitability for inclusion and appropriateness for peer review.
- The Editor identifies appropriate reviewers, who are selected on the basis of their specialist knowledge in the relevant area, following consultation with a member of the Editorial Board where necessary.
- We aim to have the final peer review decision within 4 weeks.
- Following review, papers are either accepted without modification, returned to the author(s) to incorporate required changes or not accepted for publication.

- The Editor reserves the right to accept or reject any proposed amendments on the advice of the Editorial Board and reviewers.

Submissions and instructions for authors

- The Editor commissions articles with guidance from the Editorial Board and unsolicited articles are welcomed.
- The Editor is always keen to hear from authors wishing to discuss potential submissions, and will give due consideration to any proposals. Please contact the Editor for further details: editorialmanager@touchmedicalmedia.com
- Instructions for authors are available from the website www.touchENDOCRINOLOGY.com

Distribution and readership

touchREVIEWS in Endocrinology is distributed globally, on a bi-annual basis, through controlled circulation to healthcare and pharmaceutical professionals in the field.

Abstracting and indexing

touchREVIEWS in Endocrinology (formerly *EU Endocrinology*) is abstracted, indexed and listed in PubMed Central, Embase, EBSCO, Genamics JournalSeek, Google Scholar and IndexCopernicus.

Copyright

Authors transfer copyright of their article to Touch Medical Media, who publish the article as free-to-access to registered users.

Free-to-access

All articles are free-to-access, which allows anyone in the endocrinology field to download published articles free of charge.

Online resources


www.touchmedicalmedia.com provides clinicians and other industry professionals with free resources spanning nine therapy areas including cardiology, endocrinology, haematology, immunology, infectious diseases, neurology, oncology, ophthalmology, and respiratory and pulmonary diseases.

Society partners

touchENDOCRINOLOGY.com has developed very valuable society partnerships with the most respected not-for-profit medical societies internationally.

These partnerships are key as touchENDOCRINOLOGY.com helps to promote awareness of these medical societies while also providing free-to-access, peer-reviewed articles and multimedia content to the society members, which ensures that the industry is kept up-to-date with the latest cutting-edge content and opinion from world-renowned doctors.

About Touch Medical Media

Touch Medical Media publishes a rich and diverse portfolio of free-to-access, peer-reviewed journals across the clinical and pharmaceutical arenas. Touch Medical Media aims to assist in the education and practice of healthcare and pharmaceutical professionals. 





Foreword

1 Foreword

Steve Bain

Assistant Medical Director for Research & Development for Swansea Bay University Health Board; Clinical Director of the Diabetes Research Unit in Swansea University, Swansea, UK

Expert Interview

Liver Disorders

2 The Global Liver Institute “Liver Health is Public Health” Initiative

Donna R Cryer

Global Liver Institute, Washington DC, WA, USA

Editorial

Diabetes

4 ADA–EASD Consensus Report on the Management of Hyperglycaemia in Type 2 Diabetes in an Afro-Asian Context: Broadening the Perspective

Saptarshi Bhattacharya¹ and Sanjay Kalra^{2,3}

1. Department of Endocrinology, Indraprastha Apollo Hospitals, New Delhi, India; 2. Department of Endocrinology, Bharti Hospital, Karnal, India; 3. University Center for Research & Development, Chandigarh University, Mohali, Punjab, India

7 Alarming Surge in Early-onset Type 2 Diabetes: A Global Catastrophe on the Horizon

Arefin Sadat

Chandpur Medical College, Chandpur, Bangladesh

Reviews

Diabetes

9 Impact of Enhanced External Counter-pulsation Therapy on Glycaemic Control in People With Prediabetes and Type 2 Diabetes Mellitus: A Systematic Review and Meta-analysis

Lakshmi Nagendra,¹ Deep Dutta,² Meha Sharma³ and Harish Bg⁴

1. Department of Endocrinology, JSS Academy of Higher Education and Research, Mysore, India; 2. Department of Endocrinology, Center for Endocrinology Diabetes Arthritis & Rheumatism (CEDAR) Superspeciality Healthcare, Dwarka, New Delhi, India; 3. Department of Rheumatology, Center for Endocrinology Diabetes Arthritis & Rheumatism (CEDAR) Superspeciality Healthcare, Dwarka, New Delhi, India; 4. Department of Anaesthesiology, JSS Academy of Higher Education and Research, Mysore, India

16 What is Glycaemic Variability and which Pharmacological Treatment Options are Effective? A Narrative Review

Juan Miguel Huertas Cañas, María Alejandra Gomez Gutierrez and Andres Bedoya Ossa

Pontificia Universidad Javeriana, Bogotá, Colombia

22 Teplizumab in Type 1 Diabetes Mellitus: An Updated Review

Simran Thakkar,¹ Aditi Chopra,² Lakshmi Nagendra,³ Sanjay Kalra⁴ and Saptarshi Bhattacharya¹

1. Department of Endocrinology, Indraprastha Apollo Hospitals, New Delhi, India; 2. Department of Endocrinology, Manipal Hospital, Bengaluru, India; 3. Department of Endocrinology, JSS Medical College, Mysuru, India; 4. Department of Endocrinology, Bharti Hospital, Karnal, Haryana, India



Cardiovascular Risk

31 Endocrine Hypertension: The Urgent Need for Greater Global Awareness

Cornelius J Fernandez,¹ Lakshmi Nagendra,² Mohammed Alkhalifah^{3,4} and Joseph M Pappachan^{3,5,6}

1. Department of Endocrinology and Metabolism, Pilgrim Hospital, United Lincolnshire Hospitals NHS Trust, Boston, UK; 2. Department of Endocrinology, JSS Medical College, JSS Academy of Higher Education and Research, Mysore, India; 3. Department of Endocrinology and Metabolism, Lancashire Teaching Hospitals NHS Trust, Preston, UK; 4. Department of Family Medicine & Diabetes, King Saud University Medical City, Riyadh, Saudi Arabia; 5. Faculty of Science, Manchester Metropolitan University, Manchester, UK; 6. Faculty of Biology, Medicine and Health, The University of Manchester, Manchester, UK

Endocrine Oncology

42 Prognostic Biomarkers in Pituitary Tumours: A Systematic Review

Eirini Papadimitriou,¹ Eleftherios Chatzellis,² Anastasia Dimitriadi,³ Gregory A Kaltsas,¹ Stamatios Theocharis⁴ and Krystallenia I Alexandraki⁵

1. First Department of Propaedeutic Medicine, Laiko Hospital, Medical School, National and Kapodistrian University of Athens, Athens, Greece; 2. Endocrinology Diabetes and Metabolism Department, 251 Hellenic Air Force and VA General Hospital, Athens, Greece; 3. Department of Pathology, Metropolitan Private Hospital, Athens, Greece; 4. First Department of Pathology, Medical School, National and Kapodistrian University of Athens, Athens, Greece; 5. Second Department of Surgery, Aretaieio Hospital Athens, Medical School, Athens, Greece

Thyroid Disorders

54 An Update on Alopecia and its Association With Thyroid Autoimmune Diseases

Doaa Aboalola,^{1,2,3} Sihem Aouabdi,^{1,2,3} Majed Ramadan,^{1,2,3} Tariq Alghamdi,^{1,2,3} Mona Alsolami,^{1,2,3} Dalal Malibari^{1,2,3} and Rawiah Alsiary^{1,2,3}

1. King Abdullah International Medical Research Center, Jeddah, Western Region, Saudi Arabia; 2. King Saud bin Abdulaziz University for Health Sciences, Jeddah, Western Region, Saudi Arabia; 3. Ministry of National Guard Health Affairs, Jeddah, Western Region, Saudi Arabia

Paediatric Endocrinology

60 Are Prepubertal Gynaecomastia and Premature Thelarche Linked to Topical Lavender and Tea Tree Oil Use?

Elsa W Braunstein¹ and Glenn D Braunstein²

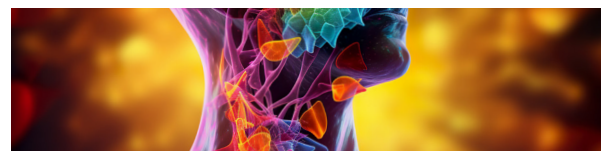
1. Department of Pathology, Cedars-Sinai Medical Center, Los Angeles, CA, USA; 2. Department of Medicine, Cedars-Sinai Medical Center, Los Angeles, CA, USA

Reproductive Endocrinology

69 Fezolinetant: A Potential Treatment for Moderate to Severe Vasomotor Symptoms of Menopause

Barbara DePree

Holland Hospital Women's Specialty Care, Holland, MI, USA



Original Research

Diabetes

- 73 Clinical Profile and Factors Associated with Adverse Outcomes in Coronavirus Disease 2019-associated Mucormycosis: A Single-centre Study**
Krishna S Nair,¹ Murali Alagesan,¹ Dhanya Jose,² Chidambaram Yoganathan,¹ Rethinam Saravanan,³ Krishnasamy Karthikeyan,⁴ Karuppannasamy Divya,⁵ Dinesh Babu,⁶ Cyril Rajan¹ and Joseph M Pappachan^{7,8}

1. Department of General Medicine, PSG Institute of Medical Sciences and Research Center, Coimbatore, India; 2. Department of Community Medicine, Goa Medical College, Goa, India; 3. Department of Oral & Maxillofacial Surgery, PSGSSH, Coimbatore, India; 4. Department of ENT, PSG Institute of Medical Sciences and Research Center, Coimbatore, India; 5. Department of Ophthalmology, PSG Institute of Medical Sciences and Research Center, Coimbatore, India; 6. Department of Dental Surgery, PSG Institute of Medical Sciences and Research Center, Coimbatore, India; 7. Department of Medicine & Endocrinology, Lancashire Teaching Hospitals NHS Foundation Trust, Preston, UK; 8. Faculty of Science, Manchester Metropolitan University, Manchester, UK

Case Report

Thyroid Disorders

- 80 Parathyroid Carcinoma Presenting as Recurrent Primary Hyperparathyroidism and Neck Mass: A Case Report**
Hiya Boro,¹ Harish Sharma,² Deepak Mittal,² Mohit Pareek,³ Shilpa Chugh,⁴ Mohar Singh Jakhar,⁵ Neeraj Nagar,⁵ Lovekesh Bhatia,⁶ Sanjay Saini,² Vashishth Joshi,² Sahil Vaid,⁵ Velmurugan Mannar,⁷ Lakshmi Nagendra,⁸ Mazhar Dalvi⁹ and Vikash Bundela¹⁰

1. Department of Endocrinology and Metabolism, Aadhar Health Institute, Hisar, Haryana, India; 2. Department of Surgery, Aadhar Health Institute, Hisar, Haryana, India; 3. Department of Otorhinolaryngology, Aadhar Health Institute, Hisar, Haryana, India; 4. Department of Pathology, Aadhar Health Institute, Hisar, Haryana, India; 5. Department of Anaesthesiology and Critical Care, Aadhar Health Institute, Hisar, Haryana, India; 6. Department of Radiodiagnosis, Aadhar Health Institute, Hisar, Haryana, India; 7. Department of Endocrinology, Aster Clinic, Dubai, United Arab Emirates; 8. Department of Endocrinology, Jagadguru Sri Shivarathreeshwara Medical College, Mysuru, India; 9. Department of Endocrinology, Al Noor Mediclinic, Abu Dhabi, United Arab Emirates; 10. Department of Gastroenterology, Aadhar Health Institute, Hisar, Haryana, India